

Bridges, ROADS AND Rivers

Stratford-Perth Archives, Campbell Family Photograph Collection



- 0001** Looking easterly at the first dam, a wooden structure, on the Thames River in Mitchell. The photo was taken from
(3) the west bank of the Thames, downstream from the dam, which was just north of the Ontario Road bridge.

Stratford-Perth Archives, Campbell Family Photograph Collection



0002 Looking southwest onto the millpond created by the dam on the Thames River in Mitchell. The photo was taken in the spring of 1908 from the east bank of the Thames, upstream from the dam. The cluster of buildings beyond the dam, on the left side of the photo, includes the town's power station and woollen mills.

Stratford-Perth Archives, Campbell Family Photograph Collection



0003 Looking west on Toronto Street from St. Andrew Street, across the Thames River and bridge near the William Eizerman and Sons planing mill, to Blanshard Street (Highway 23 south). The sidewalks are concrete but the roads are unpaved. Some of these trees continue to shade the street. The first house on the right was for many years the manse for Trinity Anglican Church.

Stratford-Perth Archives, Campbell Family Photograph Collection



- 0004** This is a southerly view of the wooden bridge on Blanshard Street (Highway 23 south) over the railway tracks that run west out of Mitchell to Goderich. The road, not yet paved, heads in a southerly direction towards Russeldale and London. This bridge was replaced by a steel structure in about 1922.
- (2)

Stratford-Perth Archives, Campbell Family Photograph Collection



0005 Ontario Road, in pre-pavement days, running westerly into Mitchell from near its intersection with Arthur Street.

Stratford-Perth Archives, Campbell Family Photograph Collection



0006 Eastbound on Ontario Road (Highway 8) out of Mitchell past the Presbyterian cemetery, before the road was paved. This photo was taken just east of the Arthur Street intersection.
(2)

Stratford-Perth Archives, Campbell Family Photograph Collection



- 0007 (3)** A northeasterly view of the Thames River and Mitchell (in winter) from the bridge on Blanshard Street (Highway 23 south) over the railway tracks. The bridge to the left is part of Toronto Street and spans the Thames River. At the extreme right is Knox Presbyterian Church, on the northwest corner of Adelaide and St. Andrew streets. Also on the right side of the photo, between the two small trees and the lower fence, is Whirl Creek, which runs into the Thames from the east.

Stratford-Perth Archives, Campbell Family Photograph Collection



- 0008 (2)** A northeasterly view of the Thames River and Mitchell (in summer) from the bridge on Blanshard Street (Highway 23 south) over the railway tracks. At the extreme right is Knox Presbyterian Church, on the northwest corner of Adelaide and St. Andrew streets. Below it is Tom Roney's blacksmith and wagon-making shop. Also on the right side of the photo, between the two small trees and the lower fence, is Whirl Creek, which runs into the Thames from the east. The three towers near the centre of the photo belong to the Merchants Bank, the town hall and the fire hall, all at the intersection of Ontario Road and St. Andrew Street. The biggest building on the horizon at left is the Whyte packing company.

Stratford-Perth Archives, Campbell Family Photograph Collection



0009 A southwesterly view of the Thames River below the dam on the Thames River in Mitchell. This photo was
(2) taken on the east side of the river just south of the dam.

Stratford-Perth Archives, Campbell Family Photograph Collection



- 0010** An aerial photo of Mitchell looking to the northeast. Commissioned by the provincial Department of Lands and Forest, it was taken in March 1963. Dominant through the middle of the photo is the Thames River, flowing from north to south, over the newly constructed concrete dam, and under bridges on Ontario Road and Toronto Street. The cinder track near the top left belongs to Mitchell District High School. The dirt track at right is part of the agricultural grounds at Keterson Park. The main roads in the photo are Ontario Road (Highway 8), running east-west, left-right; St. George Street (Highway 23 north), running north-south, top left part of photo; and Blanshard Street (Highway 23 south), running north-south, lower right part of the photo, close to the Thames but mostly hidden by trees. To the right of the intersection of Blanshard Street and Ontario Road (east of the Thames River) is Mitchell's main business block, dominated on the north side by the Hicks House (dark colour).

Stratford-Perth Archives, Campbell Family Photograph Collection



0011 Enjoying the Thames River above and west of the dam in 1907. The people in this northerly view are unidentified.
(2)

Stratford-Perth Archives, Campbell Family Photograph Collection



0012 A winter view of the wooden dam on the Thames River in Mitchell. The photo was taken downstream from the
(3) dam, on the east side of the Thames, north of the bridge on Ontario Road.

Stratford-Perth Archives, Campbell Family Photograph Collection



- 0013** Attached notes indicate this photo is a southeasterly view of the millpond created above the dam on the Thames River in Mitchell. “There was an island in pond,” say the notes, “and this must have been taken from island.” In any event, the water level appears to be high.

Stratford-Perth Archives, Campbell Family Photograph Collection



- 0014** Taken from the west side of the river, this is the walkway that stretches to the east and crosses one of the earliest dams on the Thames River in Mitchell.
(2)

Stratford-Perth Archives, Campbell Family Photograph Collection



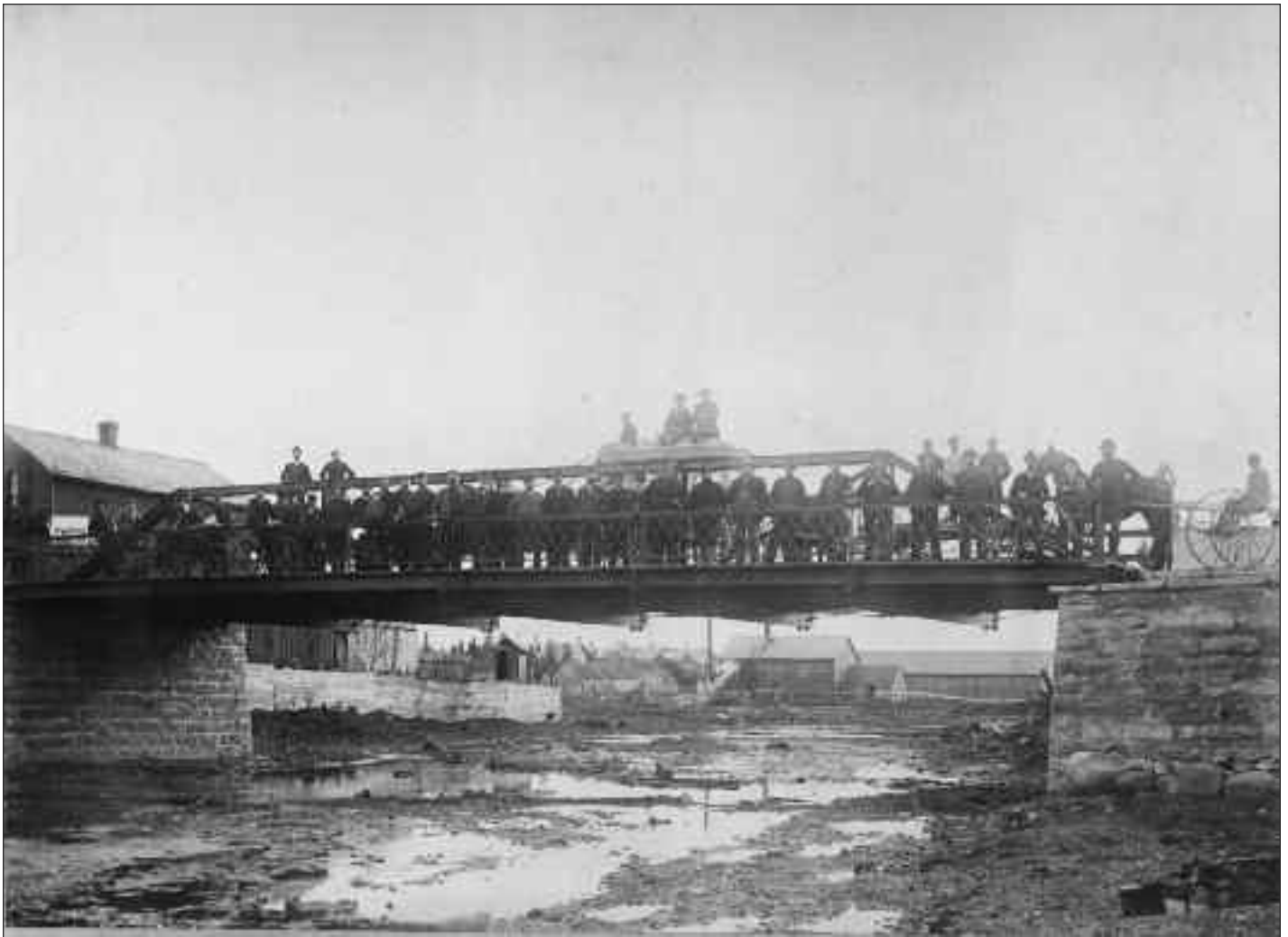
- 0015** A southerly look under the Ontario Road bridge over the Thames River. From the left: a privy belonging to the McLaren blacksmith and wagon-building operation (just east of the bridge), a tannery building, an evaporator for drying apples and Tom Smale's aging barn. Tom, too, was a smithy who had a wagon shop and also worked with tin, sheet iron and copper. In that the river appears to have been drained, the photo may have been taken soon after construction of this version of the bridge.
- (3)**

Stratford-Perth Archives, Campbell Family Photograph Collection



0016 Boating on the millpond above the dam across the Thames River in Mitchell. It is likely the photo was taken from near the dam, which was closer to the east side of the river.

Stratford-Perth Archives, Campbell Family Photograph Collection



0017 A gathering of citizens, bicycles, horses and buggies on the Ontario Road bridge over the Thames River. From the left: the McLaren blacksmith and wagon-building operation and its privy, a tannery building and an evaporator for drying apples. In that the river appears to have been drained, the photo may have been taken soon after construction of this version of the bridge.

Stratford-Perth Archives, Campbell Family Photograph Collection



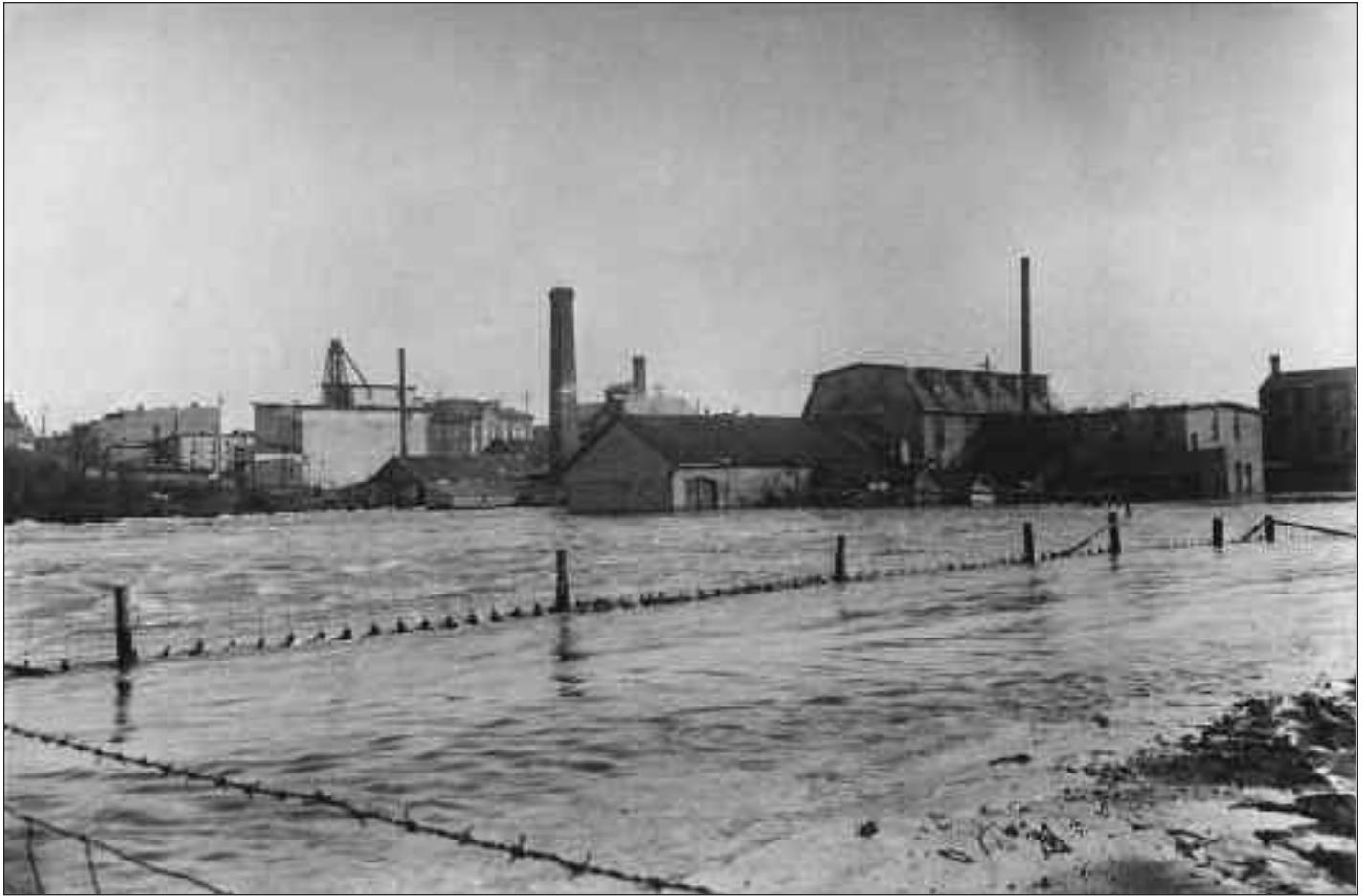
0019 In April 1912, a spring thaw more rapid than usual caused an upstream ice-jam to break through a protective log boom. When the collective mess burst through and over the Mitchell dam, it took out the sluice gates and flooded some buildings downstream, including the woollen mill (left) and powerhouse. In this photo, a woman (blurred by her movement) looks down at the powerhouse from Ontario Road, just east of the river.

Stratford-Perth Archives, Campbell Family Photograph Collection



0020 In April 1912, a spring thaw more rapid than usual caused an upstream ice-jam to break through a protective log boom. When the collective mess burst through and over the Mitchell dam, it took out the sluice gates and flooded some buildings downstream. In the foreground of this photo is the millrace, where a log holds back chunks of ice. Those gathered to survey the damage at close range include William [Bill] Campbell (second from left).

Stratford-Perth Archives, Campbell Family Photograph Collection



0021 In April 1912, a spring thaw more rapid than usual caused an upstream ice-jam to break through a protective log boom. When the collective mess burst through and over the Mitchell dam, it took out the sluice gates and flooded some buildings downstream, including the powerhouse (left stack) and the Dufton and Waterhouse woollen mill buildings (on the right, between the stacks).

Stratford-Perth Archives, Campbell Family Photograph Collection



0022 A southerly view of the Thames River, downstream from the Toronto Street bridge, where it is joined by Whirl Creek, flowing from the east.

Stratford-Perth Archives, Campbell Family Photograph Collection



0023 A damaged photo of the Thames River and ice flowing over the flood wall and through Mitchell's broken dam in April 1912. The flood was caused by a spring thaw more rapid than usual. It resulted in an upstream ice-jam breaking through a protective log boom. This photo was taken from the river's eastern shore, downstream of the dam.

Stratford-Perth Archives, Campbell Family Photograph Collection



0024 Men, women and children enjoy some boating on the Thames River in Mitchell, probably upstream of the dam.

Stratford-Perth Archives, Campbell Family Photograph Collection



0025 Two men enjoy some boating on the Thames River in Mitchell, upstream of the dam. The stack in the background belongs to the woollen mill just west and north of the Ontario Road bridge.

Stratford-Perth Archives, Campbell Family Photograph Collection



0026 In April 1912, a spring thaw more rapid than usual caused an upstream ice-jam to break through a protective log boom. When the collective mess burst through and over the Mitchell dam, it took out the sluice gates and flooded some buildings downstream. This westerly view of Ontario Road, from just west of the St. George Street intersection, shows people gathered on the Ontario Road bridge to view the floodwaters. From the left: the Mitchell Advocate office and print shop, the Stuart feed mill, the Collison House hotel and the Wettlaufer foundry. From the right: the Hill foundry, the town's powerhouse and the Dufton woollen mill. The lower levels of the powerhouse and woollen mill were flooded.

Stratford-Perth Archives, Campbell Family Photograph Collection



0027 A photo of the Thames River roaring over the flood wall and through Mitchell's broken dam in April 1912. The flood was caused by a spring thaw more rapid than usual. This photo was taken from the river's eastern shore, near the sluice gate of the dam.

Stratford-Perth Archives, Campbell Family Photograph Collection



0029 Five unidentified young men play on the dam and in the Thames River in the 1950s. This dam, the second to help control the flow of the Thames through Mitchell, was replaced by a more substantial structure in 1962-63.

Stratford-Perth Archives, Campbell Family Photograph Collection



0030 Five unidentified young men play on the dam and in the Thames River in the 1950s. This dam, the second to help control the flow of the Thames through Mitchell, was replaced by a more substantial structure in 1962-63.

Stratford-Perth Archives, Campbell Family Photograph Collection



0031 Five unidentified young men play on the dam and in the Thames River in the 1950s. This dam, the second to help control the flow of the Thames through Mitchell, was replaced by a more substantial structure in 1962-63.

Stratford-Perth Archives, Campbell Family Photograph Collection



0032 A town road sign: MITCHELL, DRIVE SLOWLY